

Troner TX



The new driving force.



Attractive... Aerodynamic.

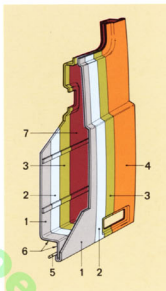
The Troner TX cab is attractive, aerodynamic, and has all the equipment necessary for operating efficiencies well into the future.

The roof spoiler and side skirts give it a modern, impressive appearance.

The headlights have efficient retractable power washers. There is a step in the bumper so that the highest parts of the cab can be easily reached.

The rearview mirrors are heated for excellent visibility in all weather conditions. The side storage compartment is useful and easily reached.

Wide steps and a door that opens to 90° offer easy access to the comfortable cab interior.



- 1) Chemical degreasing.
- 2) Nickel-zinc phosphate corrosion treatment.
- 3) Cathodic electrodeposition.
- 4) Thermosetting paint.
- 5) Mastic, watertight joint sealer.
- 6) Soundproofing and anti-chipping compound.
- 7) Pressure-injected protective wax.



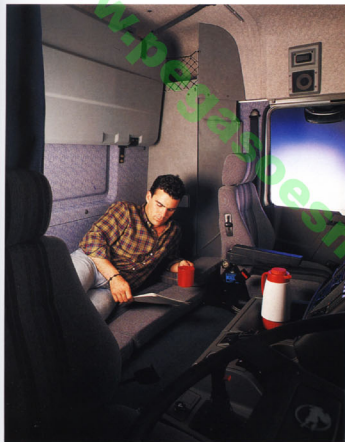
The cab's corrosion resistance is another area to which Pegaso have devoted great attention. This protection has been achieved by multi-stage treatments during completely automated manufacture. Cathodic Electrocoating is an especially effective treatment. This means



that all the cab surfaces have a paint coating of 30 microns minimum thickness, resulting in a highly corrosion-resistant finish.



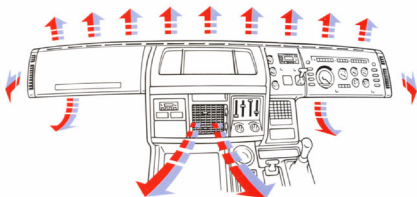
Driver environment.



The Troner's driver has total control of his interior environment.

The outside air is filtered and fed into the cab through carefully placed diffusers. Additional flow is boosted by electric fans with four speeds.

Combined with the heating and air-conditioning systems, this makes for ideal working conditions.



Ergonomic comfort.

The Troner's cab is spacious and comfortable. Its layout is designed for long, problem-free journeys over international routes. The level of fittings and standards of finish are exceptional.

Cab air suspension at four points. Thermo-acoustic insulation. Air conditioning.

An independent heater that allows the chosen temperature to be maintained without switching on the engine. Height and angle-adjustable steering-wheel. Seats with air

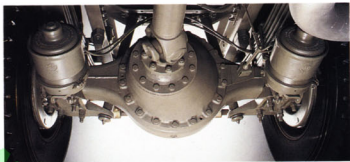


and passenger sides. Roller blinds (front and sides). Perimeter curtains. Bunks with security mesh. Wardrobe. Alarm clock. Fold-away table. Radio cassette... and an endless number of small details to make the cab of the Troner feel almost like a second home.



suspension and lumbar adjustment. The driver's seat is heated. A control panel offering complete information on everything occurring in the vehicle. Fuel warning light. Electric windows on the driver





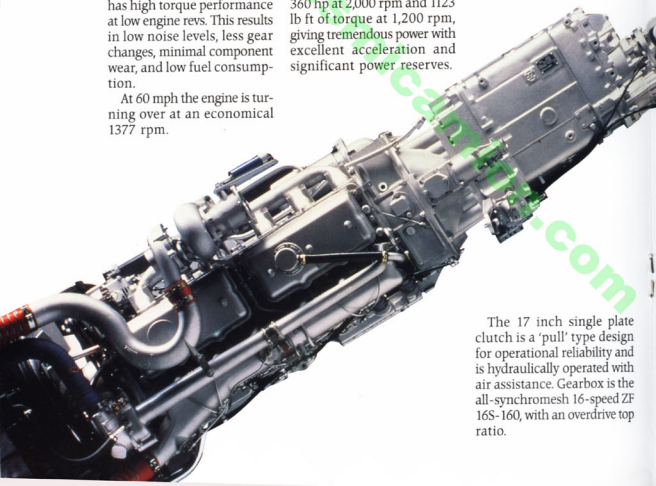
High performance driveline.

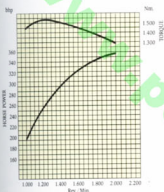
The key units of the driveline have been matched to produce a tractor unit that has high torque performance at low engine revs. This results in low noise levels, less gear changes, minimal component wear, and low fuel consumption.

At 60 mph the engine is turning over at an economical 1377 rpm.

The engine is a 24-valve, 12-litre twin flow intercooled Pegaso diesel. It develops 360 hp at 2,000 rpm and 1123 lb ft of torque at 1,200 rpm, giving tremendous power with excellent acceleration and significant power reserves.

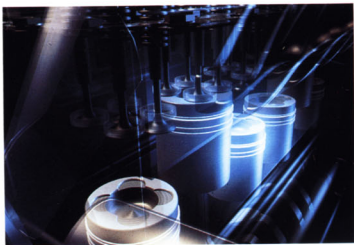
The 17 inch single plate clutch is a 'pull' type design for operational reliability and is hydraulically operated with air assistance. Gearbox is the all-synchromesh 16-speed ZF 16S-160, with an overdrive top ratio.





Turbocharger.

The ultra-modern turbocharger is designed to provide optimum combustion characteristics in the engine. The low inertia results in excellent performance when the vehicle is either partially or fully loaded.



Troner TX features.

A number of components to improve the performance of the TX have been fitted to the UK version.

Automatic brake adjustment

Brakes have to be readjusted from time to time to compensate for natural wear of the brake linings. Automatic brake adjusters are fitted on the Troner TX, so the brakes are

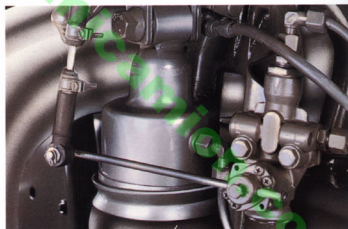


always in top condition and maintenance costs are reduced.

The system has a device which prevents brake linings from becoming completely worn out. When this is about to happen, a warning light shows on the control panel.

Cab air suspension

The Troner's cab has air suspension on its four supports. This consists of two independent circuits, one for the front and another for the rear.



loads and its use is recommended when transporting fragile goods.

It maintains a constant level whatever the load being transported, and is therefore recommended for large, solid goods since the vehicle can return empty without exceeding maximum permitted height levels.

In each one the pressure remains proportional to the weight it is supporting, thus guaranteeing comfort and eliminating vibration.

A stabilising rod prevents sideways swaying.

An anti-dip valve electronically controls excessive rocking during braking and when moving at low speeds.

Air suspension on the rear axle

Air suspension guarantees a smooth ride for full and part





Aerodynamic deflectors

The Troner TX has a complete airflow management system, consisting of a roof spoiler, side skirts, and aerodynamic hub caps on the front wheels. These were specifically designed for the cab and were tested in a wind tunnel.

Their use over long distances results in significantly reduced fuel consumption.

Independent heater

This maintains a comfortable temperature in the cab during the night, even in the harshest winter conditions. The chosen temperature and operating time can be programmed. The control is automatic. It also pre-heats the engine before start-up.

Air-conditioning

The air conditioning system is built into the cab structure during manufacture.



Control panel

Whenever something occurs in the vehicle during a journey that the driver should know about, an emergency light shows on



the most visible part of the dashboard and a warning buzzer sounds. At the same time, a sign defining the pro-

blem lights up on the control panel screen.

Equipment to improve the payload

To allow maximum carrying capacity, alloy air reservoirs and an alloy fuel tank are fitted.



Pegaso Worldwide.

Pegaso is an expanding European multinational. Founded in 1946, it is now a world-wide concern, with factories in Spain, England and Venezuela. It has commercial subsidiaries throughout Europe (Pegaso France, Pegaso Benelux and Seddon Atkinson Vehicles), and in South America (Pegaso Chile and Pegaso Venezuela).

An extensive and efficient network of Pegaso Service Centres is available on major European routes.

Pegaso Service 24 hours/365 days

With more than 50 Pegaso Service Centres 24 H/365 D across the most important European routes and a telephone service in 12 countries to answer any problem and keep you on the move.

*Pegaso Service will
answer your call
in any of these
countries with
immediate action*

Austria

Tel. 43 615 44 13

Belgium

Tel. 32 59 33 08 08

Denmark

Tel. 45 75 56 48 28

France

Tel. 33 88 72 02 99

Germany

Tel. 49 73 33 80 81 88

Holland

Tel. 31 54 83 6 49 45

Italy

Tel. 39 472 76 65 25

Norway

Tel. 47 382 49 31

Portugal

Tel. 351 293 72 843

Spain

Tel. 34 1 555 96 96

Switzerland

Tel. 41 1 83 06 080

United Kingdom

Tel. 44 53 29 35 22*

Domestic calls:

Tel. 0800 59 09 07

N.B. Please use the telephone to contact the service number in your own country if possible.

*Calls from outside U.K.



D.K.V. Credit Card

Pegaso offers its clients additional help via the use of this credit card. It can be used to pay for parts, repairs, tyres and many other services.



www.pegasoesmicamion.com



Seddon Atkinson Vehicles Ltd,
Woodstock Factory, Oldham OL3 8HP
Telephone: 061-624 0506
Telex: 667398 SEDDON G. Fax: 061-6788 953.



While all the facts and figures in this brochure are correct at the time of going to press, changes in legislation or technology could result in alterations or improvements to current specifications in order to pass on any new advantages. Seddon Atkinson vehicles limited reserve the right to change specifications without notice. Illustrations do not necessarily show vehicles in standard form. For the latest information on any model, please consult your Seddon Atkinson distributor.